

## For complete single-vendor SIP capability

Interaction Gateway provides a powerful gateway for SIP when integrated with the Interactive Intelligence Customer Interaction Center® (CIC) IP platform for contact center automation and enterprise IP telephony or with Interaction Dialer® (2.4 or higher) for SIP-based outbound predictive dialing.

The Interaction Gateway appliance also allows contact centers and businesses to do something most gateways don't: Implement a fully-integrated SIP solution for IP communications from ONE vendor. Whether a CIC or CIC/Interaction Dialer configuration, Interaction Gateway instantly enhances special dial plan routing, redundancy and load balancing across your "IC" platform.

## International protocol support

Interaction Gateway provides digital trunk support for T1/ISDN (NI2, 4ESS, 5ESS, DMS, QSIG ECMA), T1/CAS, and E1/EuroISDN.

## SIP capability for Interaction Dialer

When configured with CIC and Interaction Dialer 2.4 or higher, Interaction Gateway allows teleservices firms and businesses offering blended inbound/outbound dialing services to:

**Perform advanced call analysis for outbound dialing needs.** In a SIP station's live-side configuration, Interaction Gateway leverages Interactive Intelligence's telephony infrastructure expertise to differentiate between a live caller, an answering machine, a fax machine, a busy signal or any other call detection situation, including differentiating Special Instruction Tones (SIT) tones.

**Handle the high-volume outbound capacities of Interaction Dialer servers.** Interaction Dialer is designed for greater trunking needs and scalability with its NxM "rack and stack" architecture. The Interaction Gateway appliance also is designed in line with Interactive Intelligence's SIP-based software approach and made especially for the Interaction Dialer application. Because Interaction Dialer and Interaction Gateway integrate directly to CIC, call campaign and system performance monitoring is centralized in CIC's single administration environment.

## Models



**IG204 — 4 spans:**  
T1/96 channels, E1/120 channels



**IG208 — 8 spans:**  
T1/192 channels, E1/240 channels

## Key features

### Digital trunk-to-SIP conversion

### Available in 4-span and 8-span models

### Fully integrates to the Customer Interaction Center IP platform

- Easy to set up
- Web-based configuration
- Special dial plan routing
- A complete single-vendor solution

### Flexible NxM architecture deployment for:

- High scalability, load balancing and fault tolerance
- Increased redundancy and reliability

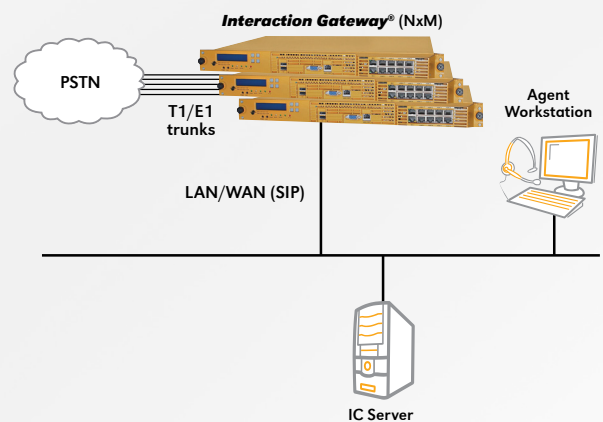
### High call volume capacity via outbound Interaction Dialer servers

- Advanced call analysis for outbound dialing

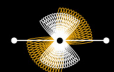
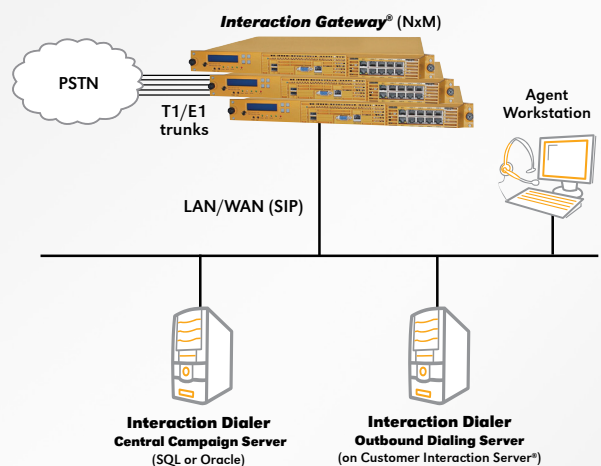
### Fax relay support

- Fax transmissions to and from the PSTN (via 7.38)

## IC Server Configuration



## Interaction Dialer Configuration



## Browser-based configuration

Install Interaction Gateway quickly and easily using a plug-in network connection and simplified deployment tool that runs from a USB key. Or if using DHCP, simply plug in the Interaction Gateway and discover the assigned IP address on the LCD screen. Once installed, Interaction Gateway's browser-based environment allows administrators to:

- Configure call routes = intelligent mapping similar to dial plan/proxy
- Continuously monitor system performance
- Load and apply Interactive Intelligence Service Updates (SUs)
- Perform simple log retrieval via FTP
- Gateway's browser-based environment allows administrators to:

## Technical specifications and features

### Protocol compatibility

- NI2, National ISDN-2
- DMS, Nortel
- E1/EuroISDN
- 5ESS, AT&T
- QSIG, ECMA
- T1/CAS
- 4ESS, AT&T:
- 164/165

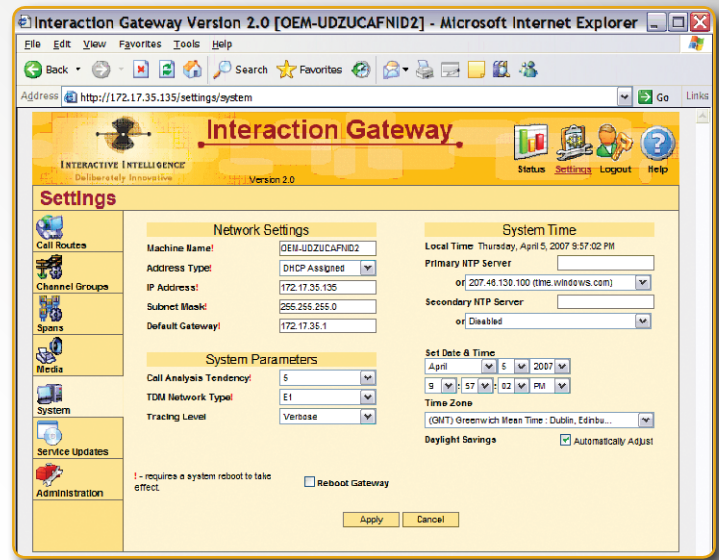
### Call analysis support with CIC 2.4 (and higher)

Return these call analysis results to CIC/Interaction Dialer for processing.

- Answering Machine
- No Answer
- SIT
- Positive Voice
- Busy
- No Circuit
- Silence Detected
- Modem
- Re-order
- Fax Machine
- No Ringback
- Vacant Code
- Cadence Break

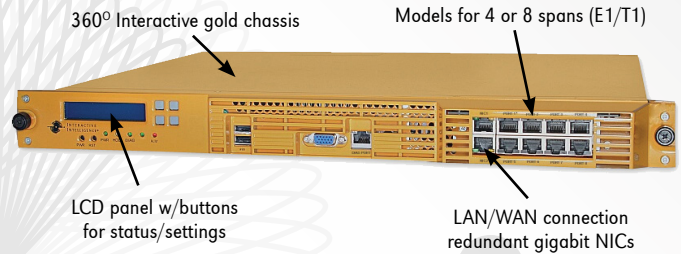
### Server

<b>Dimensions</b>	1U (H) x 16 in (D) x 16.7 (W) 19-inch rack mount, rack ear mounting
<b>Temperature</b>	Operating: 50F to 95F (10C to 35C) Non-operating: -40F to 158F (-40C to 70C)
<b>Humidity</b>	Operating: 8-80% (non-condensing)
<b>Noise</b>	Below acceptable office (55Db)
<b>AC voltage</b>	100-127 VAC or 200-240 VAC, auto-sensing
<b>DC output</b>	12V (18A max), +5V (25A max), +3.3V (15A max)
<b>Power</b>	260W minimum
<b>Processor</b>	Intel® dual core processors, DDR2 DIMM memory
<b>USB</b>	Front dual USB interfaces
<b>LAN support</b>	Dual redundant gigabit (10/100/1000 Mbps/sec) NICs
<b>Software</b>	Microsoft® Windows® XP embedded
<b>LCD display</b>	20x2, 4 keys, USB interface



Browser-based configuration for rapid deployment and configuration.

### Server highlights (Model IG208 shown)



### Headless – no mouse, monitor or keyboard required

- USB ports available

### SIP coder support – voice coding/compression

- G.711 – better quality, more bandwidth consumption
- G.729ab – low-bit rate coder, less bandwidth consumption

## INTERACTIVE INTELLIGENCE®

Interactive Intelligence offers unified business communications solutions for contact center automation, enterprise IP telephony, and business process automation, based on our open standards, all-in-one software suite. More than 4,000 organizations worldwide currently benefit from our on-premise solutions and cloud-based Communications as a Service (CaaS) offerings, including value-added services for software, hardware, implementation, consulting, support and education.

At Interactive Intelligence, it's what we do.

© 2010 - 2011 Interactive Intelligence, Inc. All rights reserved.

### World Headquarters

7601 Interactive Way  
Indianapolis, IN 46278 USA  
+1 317 872 3000 voice and fax

### EMEA

Thames Central, Hatfield Road  
Slough, Berkshire, SL1 1QE  
United Kingdom  
+44 (0)1753 418800 voice and fax

### Asia Pacific

Suite 6.1 Level 6 Menara IMC  
8 Jalan Sultan Ismail  
50250 Kuala Lumpur  
Malaysia  
+603 2776 3333 voice  
+603 2776 3343 fax

0611

4080-IGW-ENG

www.inin.com